

**Introducing *real* stamp™**  
**Creating Smart Packages**



- RealStamp™ Systems create Unique ID's on every package.
- Turnkey Systems = Total Solution.
- “Best in Class” partners for technology and consumables.



## Smart Packages:

**A new standard is emerging – packages with a unique digital identity.**

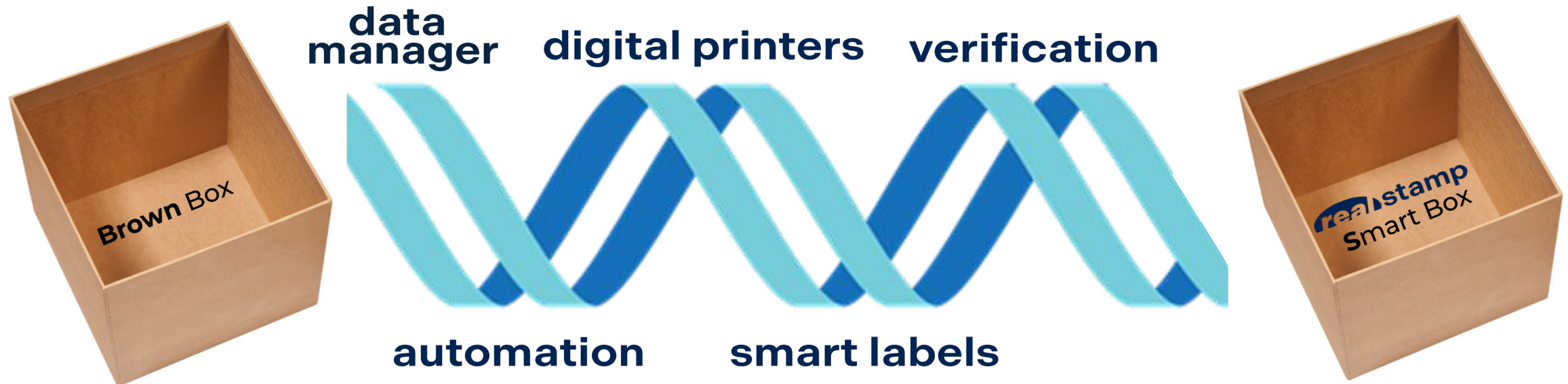
- Industry is standardizing on 2D codes, GS-1 2027 Sunrise initiative.
- RFID Labels, a \$30B industry, continues to grow at 20% to 30% per year.

# A New Dimension in Barcodes

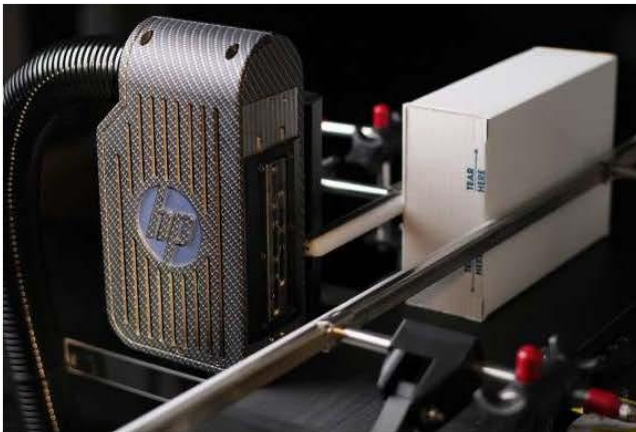
GET READY FOR SUNRISE 2027



# **realstamp™** – System Modules create a Smart Package:



# **real** digital printers™



## **Introducing the Harrier 4.25" Printer** **A New Standard in HP Technology**

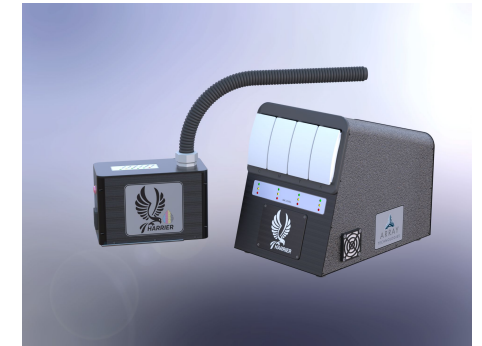
- Color and Monochrome
- 1200 DPI
- 600 feet per minute
- Print Bands: 4.25", 8.5", and 12.75"
- Horizontal or Vertical print capabilities
- Recirculating Ink Heads
- Bulk Ink Supply
- Additional configurations – 2<sup>nd</sup> Quarter 2026





# real digital printers™

Harrier Process Color	Harrier Mono	Availability
22mm/0.875"	22mm/0.875"	Q2'26
44mm/1.75"	44mm/1.75"	Q2'26
108mm/4.25"	108mm/4.25"	Now
216mm/8.50"	216mm/8.50"	Now
324mm/12.75"	324mm/12.75"	Q1'26



# real digital printers™

## Secondary Packaging

1D/2D barcodes, graphics, and human readable content



## Late-Stage Packaging

Direct label printing and custom image printing



## Mail Addressing

Addresses and barcode printing





## Harrier Printer Benefits:

### Uptime and Productivity

- Wide print band (108mm/4.25") eliminates the need for stitching
- Higher print speed and high resolutions with consistent print quality
- Better throw distance, up to 10mm, with large text and 7mm with small text

### Ease of Use

- Low user intervention
- Easily replaceable printheads
- Simplified touchscreen display and operating software

### Smart Servicing Solution

- Recirculating ink printheads for reliable printing
- Significantly reduces the need for pen maintenance while providing extended decap times

### Sustainability

- Water-based inks with low VOC emissions
- Direct package prints where boxes can be recycled directly

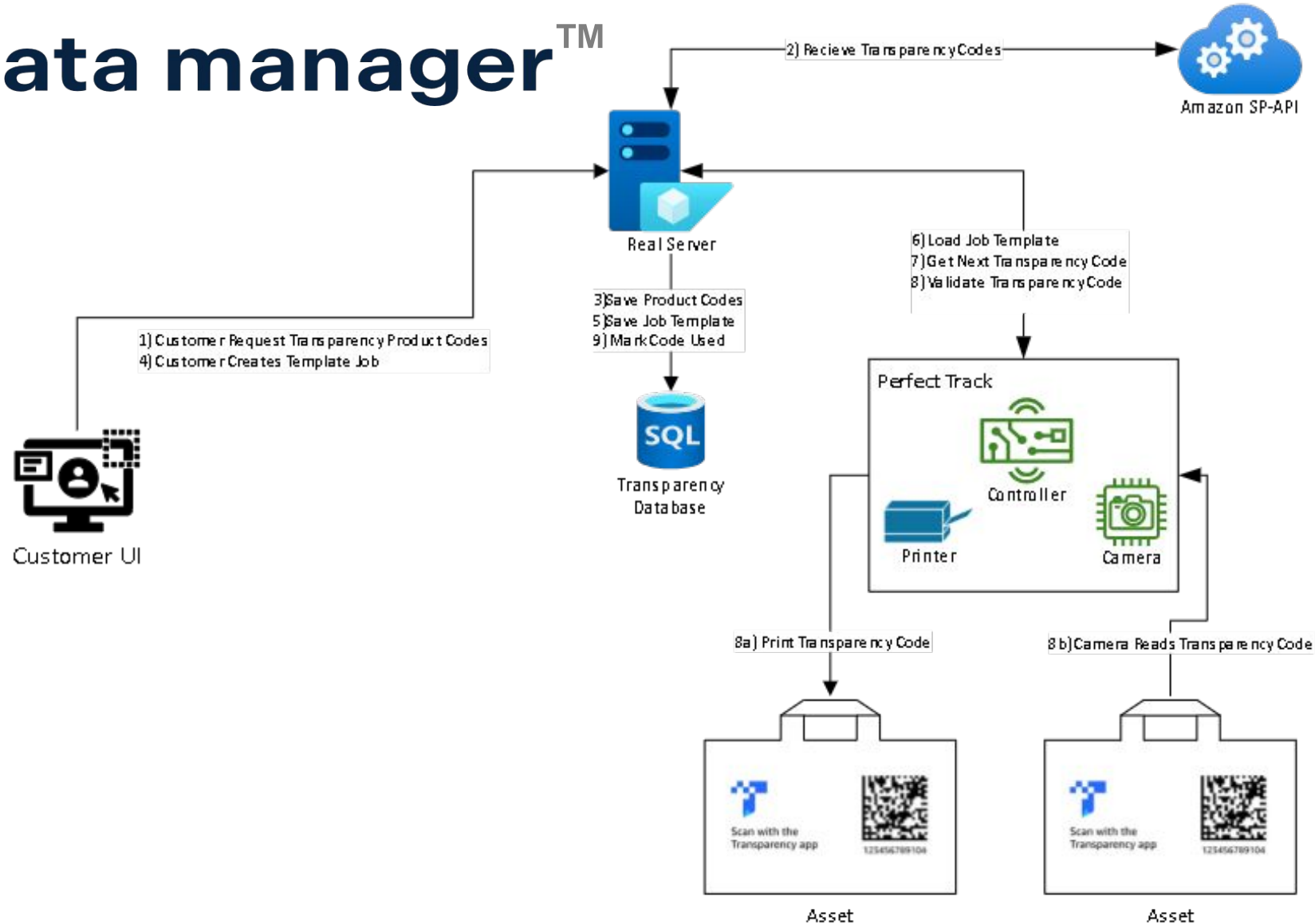
### Total Cost of Operation

- Lower upfront and running costs
- Lower printhead replacement costs





# real data manager™



**real automation™**



## Application Conveyors:

- Cases
- Cartons
- Bottles
- & more

**real automation™**



### **Feeders & Vacuum Conveyors:**

- Knockdown Case Blanks
- Die Cut Blanks
- Carton Blanks
- Bags
- & more

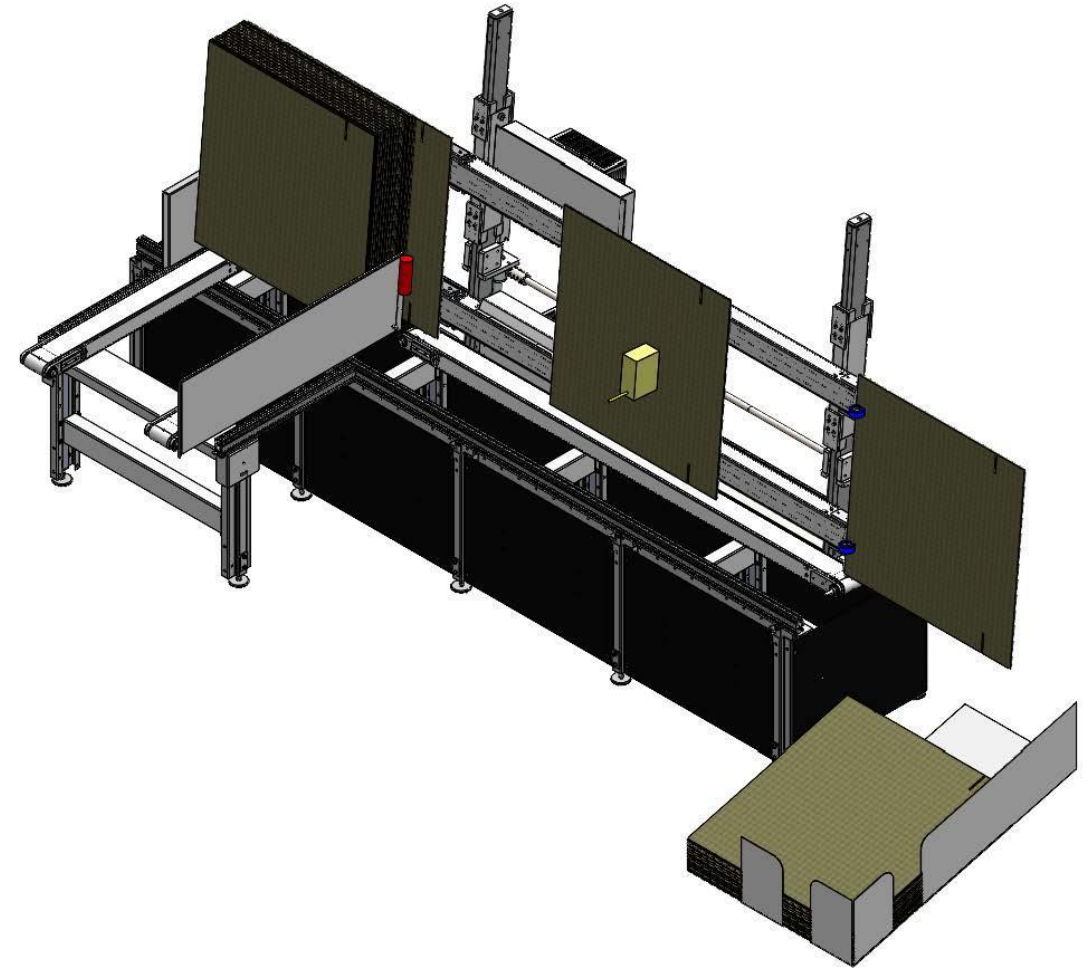
Standard Format – 24"

Wide Format – 48"



## Vertical Case Printer – Print Two Sides Knockdown Case Blanks

- Three Modules:
  - Case Feeder with 48" Powered Magazine.
  - 8' Vacuum Transfer with Bottom Conveyor.
  - Simple Stacker or optional 2-Sided Stacker





**real smart labels™**





## real smart labels™

### RFID in Packaging:

- RFID tags embedded in smart labels
- Enables bulk scanning, no line-of-sight needed
- Enhances automation in supply chain

Walmart Mandate:  
All products must incorporate RFID Labels.  
Result: 98% Accuracy of Inventory Counts



# real smart labels™

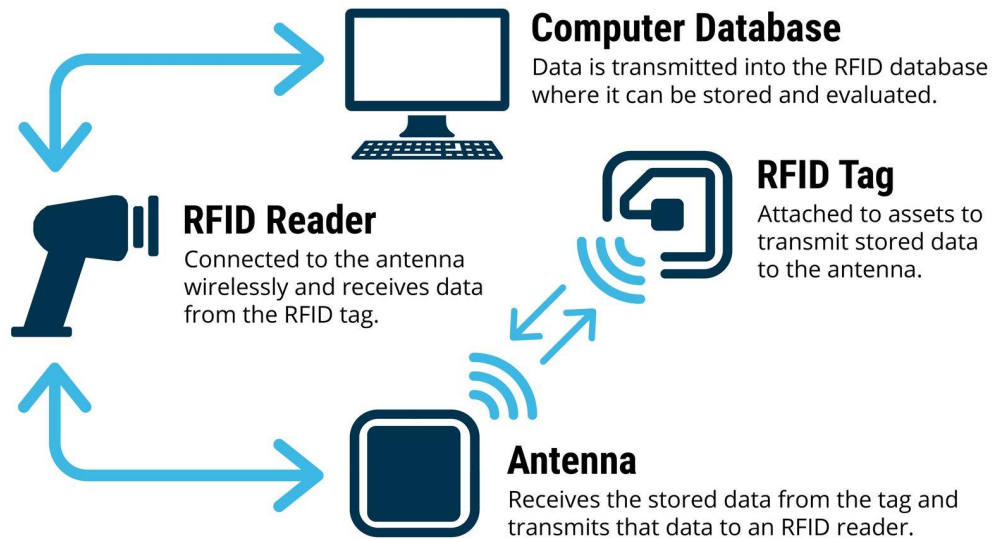
## Example – Amazon Transparency Code:

- Enhanced product traceability.
- Supports real-time recalls and inventory tracking.
- Enables product authentication and transparency.
- Combines consumer and supply chain data in one code.

Replace label with ink jet print.  
14,500,000 labels/year  
ROI is 45 days



# **real** verification™



RFID Write/Read Systems



Print Verification / Vision Systems



**real**stamp™

